

SwitchLine

Accessories

Ordering information



OHB_

Handles, door mounting

Plastic I - 0 - II handle, IP65, padlockable with three padlocks in 0-position, door interlock in I- and II-position and when padlocked.

Suitable for switches	Colour	Shaft diam. [mm]	Type	Order number	Weight [kg]
OT160...250E_C	black	6	OHB65J6E011	1SCA022383R2480	0.12
OT315...400E_C	black	12	OHB95J12E011	1SCA022621R0760	0.12
OT630...800E_C	black	12	OHB125J12E011	1SCA022589R3340	0.14

Plastic I - 0 - II handle, IP65, padlockable with three padlocks in I- , 0- and II-position, door interlock in I- and II-position and when padlocked.

OT160...250E_C	black	6	OHB65J6E311	1SCA022662R4730	0.12
OT315...400E_C	black	12	OHB95J12E311	1SCA022779R2140	0.12
OT630...800E_C	black	12	OHB125J12E311	1SCA022615R1730	0.14

Handles, direct mounting

Plastic I - 0 - II handle, padlockable with three padlocks in 0-position. Includes a shaft and a mechanism cover.

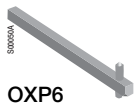
OT160...250E_C	black	shaft included	OTV250ECK	1SCA022783R0090	0.08
OT315...400E_C	black	shaft included	OTV400ECK	1SCA022783R0170	0.26
OT630...800E_C	black	shaft included	OTV800ECK	1SCA022797R2470	0.30



OTV_

Extended shafts

Suitable for switches	Installation depth [mm]	Type	Order number	Weight [kg]
Shaft diameter 6 mm				
OT160...250E_C	166...214	OX P6X90	1SCA022064R1180	0.03
	209...254	OX P6X130	1SCA022057R0570	0.04
	240...285	OX P6X161	1SCA022067R1760	0.05
	289...334	OX P6X210	1SCA022295R6080	0.06
	369...414	OX P6X290	1SCA022042R6370	0.08
	439...484	OX P6X360	1SCA022042R6530	0.11
Shaft diameter 12 mm				
OT315...400E_C	209...266	OX P12X107	1SCA022029R9750	0.12
	243...307	OX P12X148	1SCA022658R5570	0.17
	261...325	OX P12X166	1SCA022325R7100	0.20
	280...344	OX P12X185	1SCA022325R6710	0.22
	345...409	OX P12X250	1SCA022325R6980	0.29
	375...439	OX P12X280	1SCA022137R5140	0.33
	420...484	OX P12X325	1SCA022042R5810	0.38
	490...554	OX P12X395	1SCA022042R5990	0.46
	560...624	OX P12X465	1SCA022042R6020	0.54
	OT630...800E_C	287...385	OX P12X148	1SCA022658R5570
324...422		OX P12X185	1SCA022325R6710	0.22
389...487		OX P12X250	1SCA022325R6980	0.29
464...562		OX P12X325	1SCA022042R5810	0.38
534...632		OX P12X395	1SCA022042R5990	0.46
604...702		OX P12X465	1SCA022042R6020	0.54



OXP6_



OXP12_

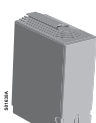
SwitchLine Accessories Ordering information



OA_G_



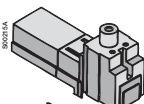
OTZC_



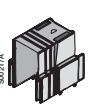
OTS_L



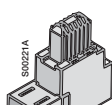
OTS_S



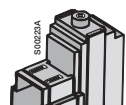
OZXB2K



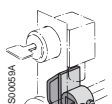
OZXB3K



OZXB4K



OZXB5K



OETLZW_

Auxiliary contact blocks

Mounting on the right side of the switch: Max. 4 auxiliary contact blocks/switch (totally 8 blocks). Simultaneous action with the main contacts.

Function	Protection degree	Type	Order number	Weight [kg]
1NO	IP20	OA1G10	1SCA022353R4970	0.03
1NC	IP20	OA3G01	1SCA022456R7410	0.03

Bridging bars

The bridging bars provide a connection link either on the incoming or outgoing side of the switch.

Suitable for switches	Number of poles	Type	Order number	Weight [kg]
OT160...250 E_C	3	OTZC13	1SCA022767R6910	0.60
	4	OTZC14	1SCA022767R7040	0.80
OT315...400 E_C	3	OTZC23	1SCA022767R7120	0.60
	4	OTZC24	1SCA022767R7210	0.80
OT630...800 E_C	3	OTZC33	1SCA022785R7020	1.00
	4	OTZC34	1SCA022785R7110	1.30

Terminal shrouds

Snap-on mounting, grey plastic. Transparent shrouds available on request, please replace the letter "G" with "T". Suitable for the upper switch. A kit includes three (four) shrouds which can be used on either side of the switch.

Suitable for switches	Number of poles	Description	Type	Order number	Weight [kg]
OT160...250	3	Long type	OTS250G1L/3	1SCA022731R8150	0.09
	3	Short type	OTS250G1S/3	1SCA022731R8310	0.06
OT160...250	4	Long type	OTS250G1L/4	1SCA022731R8230	0.12
	4	Short type	OTS250G1S/4	1SCA022731R8400	0.08
OT315...400	3	Long type	OTS400G1L/3	1SCA022736R8840	0.15
	3	Short type	OTS400G1S/3	1SCA022736R9060	0.09
OT315...400	4	Long type	OTS400G1L/4	1SCA022736R9490	0.20
	4	Short type	OTS400G1S/4	1SCA022736R9650	0.12
OT630...800	3	Long type	OTS800G1L/3	1SCA022776R7890	0.32
	3	Short type	OTS800G1S/3	1SCA022776R8190	0.17
OT630...800	4	Long type	OTS800G1L/4	1SCA022776R7970	0.42
	4	Short type	OTS800G1S/4	1SCA022776R8270	0.26

Snap-on mounting, transparent plastic, IP 2X.

Suitable for terminal clamps	Number of poles	Type	Order number	Weight [kg]
OZXB2, 2L	3	OZXB2K	1SCA022264R0010	0.05
OZXB3, 4	3	OZXB3K	1SCA022264R0440	0.20
OZXB5, 6	3	OZXB4K	1SCA022199R2850	0.24
OZXB7, 7L	3	OZXB5K	1SCA022283R8040	0.13

Locking accessories

Cam attachment for adopting the switches to Castell, Lowe&Fletcher or Ronis interlock. The lock is not included. Mounting to OXP-shaft, works together with OH-door handle and a shaft.

Suitable for switches	Type	Order number	Weight [kg]
OT160...250E_C	OETLZW16	1SCA022093R2070	0.17
OT315...800E_C	OETLZW5	1SCA022052R3900	0.14

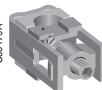
SwitchLine Accessories Ordering information

Terminal clamp sets for Al- and Cu-cables

Suitable for switches	Cable cross section [mm ²]	Suitable shroud	Type	Order number	Pack. [pcs]
OT 160...250	10...70	OTS250_L	OZXB1L	1SCA022169R2030	3
	10...70	OTS250_L	OZXB1L/1	1SCA022194R0030	1
	25...120	OZXB2K	OZXB2	1SCA022119R7610	3
	25...120	OZXB2K	OZXB2/1	1SCA022194R0200	1
	25...120	OZXB2K	OZXB2L	1SCA022158R7750	3
	25...120	OZXB2K	OZXB2L/1	1SCA022194R0460	1
	95...185	OTS250_L	OZXB8	1SCA022744R1510	3
	95...185	OTS250_L	OZXB8/1	1SCA022744R1600	1
	95...240	OTS250_L	OZXB9	1SCA022750R3210	3
	95...240	OTS250_L	OZXB9/1	1SCA022750R3300	1
OT 315...400	25...120	OZXB2K	OZXB2L	1SCA022158R7750	3
	25...120	OZXB2K	OZXB2L/1	1SCA022194R0460	1
	95...185	OZXB3K	OZXB3	1SCA022136R8100	3
	95...185	OZXB3K	OZXB3/1	1SCA022194R0620	1
	2x(95...185)	OZXB3K	OZXB4	1SCA022137R4760	3
	2x(95...185)	OZXB3K	OZXB4/1	1SCA022194R0890	1
	120...240	OZXB5K	OZXB7	1SCA022185R0040	3
	120...240	OZXB5K	OZXB7/1	1SCA022194R1430	1
	120...240	OZXB5K	OZXB7L	1SCA022185R7130	3
	120...240	OZXB5K	OZXB7L/1	1SCA022194R1600	1
	95...185	OTS400_L	OZXB8	1SCA022744R1510	3
	95...185	OTS400_L	OZXB8/1	1SCA022744R1600	1
	95...240	OTS400_L	OZXB9	1SCA022750R3210	3
	95...240	OTS400_L	OZXB9/1	1SCA022750R3300	1
OT630...800	120...300	OZXB4K	OZXB5	1SCA022137R2470	3
	120...300	OZXB4K	OZXB5/1	1SCA022194R1010	1
	2x(120...300)	OZXB4K	OZXB6	1SCA022137R4920	3
	2x(120...300)	OZXB4K	OZXB6/1	1SCA022194R1270	1



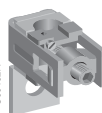
OZXB 1L



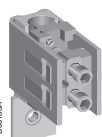
OZXB 2



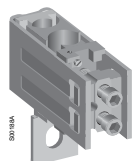
OZXB 8, 9



OZXB 2L, 7L



OZXB 3



OZXB 4